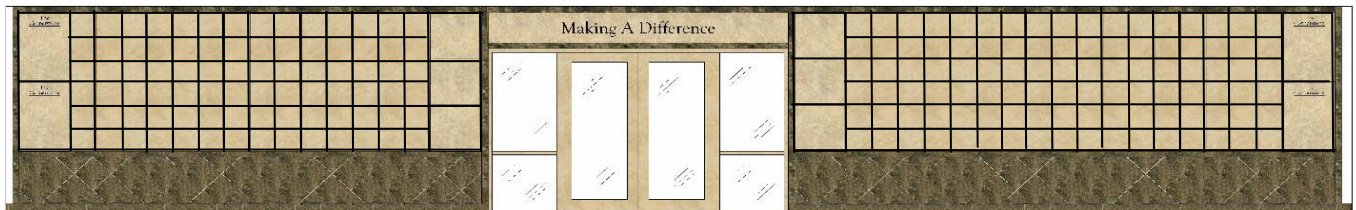


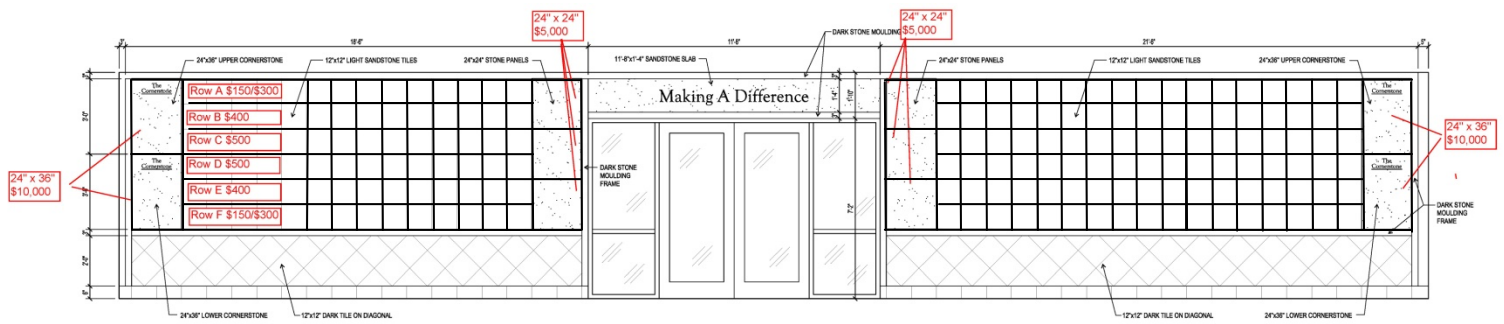
<b>\$10,000</b>	24" x 36"	Up to 8 lines of 20 characters per line.	Cornerstones
<b>\$ 5,000</b>	24" x 24"	Up to 6 lines of 20 characters per line.	Door Panels
<b>\$500</b>	12" x 12"	Up to 4 lines with a maximum of 15 characters per line.	Rows C & D
<b>\$400</b>	12" x 12"	Up 4 lines with a maximum of 15 characters per line.	Rows B & E
<b>\$300</b>	12" x 12"	Up to 4 lines with a maximum of 15 characters per line.	Rows A & F
<b>\$150</b>	6" x 12"	Up to 2 lines with a maximum of 15 characters per line.	Rows A & F

Please fill in the boxes with the wording exactly as you would like it to appear on the stone.  
 (A character includes spaces and punctuation such as hyphens, apostrophes, and periods.)

	1	2	3	4	5	6	7	8	9	10	11	12	13	14	15	16	17	18	19	20
Line 1																				
Line 2																				
Line 3																				
Line 4																				
Line 5																				
Line 6																				
Line 7																				
Line 8																				



*Sugar Grove Christian School*  
*Making a Difference Donor Wall*



## 40 YEARS AND COUNTING...

*Sugar Grove Christian School* began with a group of dedicated people who firmly believed that quality education should be coupled with Christian values. On September 2, 1969, Sharpstown Christian School opened its doors on 8405 Bonhomme Street in Houston, Texas, to a small group of children. Today, Sugar Grove Christian School, located at 11600 West Airport Boulevard in Meadows Place, Texas, benefits students from all over the Houston area.

With the school celebrating its 40th Anniversary, Sugar Grove Christian School continues to grow and succeed. As the school increases its student population and services, additional classrooms and a small gymnasium are needed. As a non-profit organization, the expansion depends upon the generosity of donations.

The *Making a Difference* Donor Wall recognizes friends who share Sugar Grove Christian School's desire to make a difference in children's education and future. The *Making a Difference* Donor Wall will be prominently located on the north end of the building surrounding the entrance of the school office. The beautiful architectural design will consist of granite and sandstone tiles. For more information: [www.sgcs.org](http://www.sgcs.org)

To participate in the *Making a Difference* Donor Wall, please complete the following form.

Name \_\_\_\_\_

Address \_\_\_\_\_

City \_\_\_\_\_ State \_\_\_\_\_ Zip Code \_\_\_\_\_

Phone \_\_\_\_\_

Email \_\_\_\_\_

Amount of tax-deductible gift enclosed  
\$ \_\_\_\_\_

Credit Card Type: Visa Discover MasterCard

Please make all checks payable to: SGCS  
Return form to:  
Making A Difference Donor Wall  
11600 West Airport Blvd.  
Meadows Place, Texas 77477

Credit Card # \_\_\_\_\_

Expiration Date: \_\_\_\_\_

Signature: \_\_\_\_\_